

CERTIFICATE OF LOCATION OF GOVERNMENT CORNER

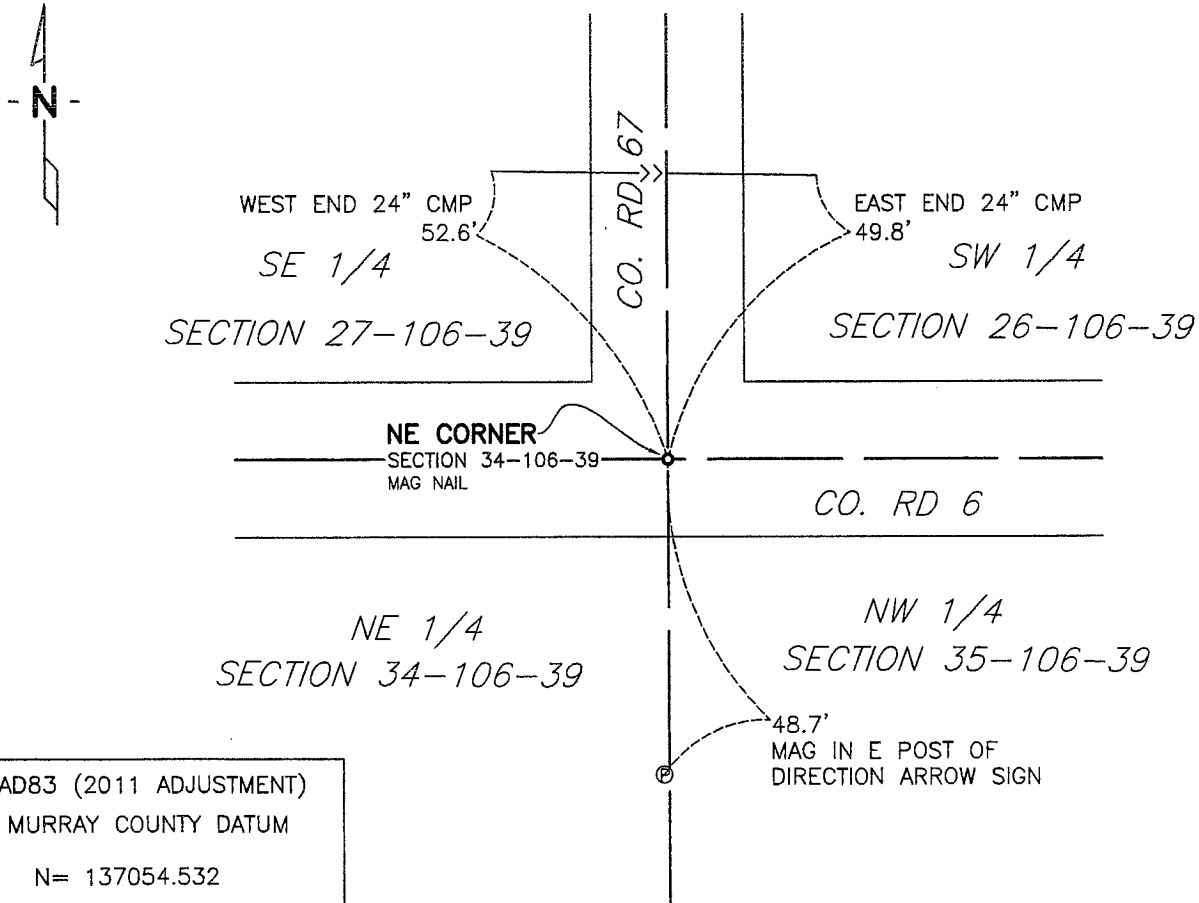
NORTHEAST Corner of Section 34, Township 106 N, Range 39 W, 5th P.M.

STATE OF MINNESOTA, County of MURRAY

At the corner location shown on the sketch:

- On 5/10/13 found a A PK NAIL DOWN 0.2' IN BITUMINOUS
DATE
- left monument as found, lowered monument, removed monument (explain)
- On 5/10/13 placed a A NEW MAG NAIL
DATE

SKETCH OF REFERENCE TIES



NAD83 (2011 ADJUSTMENT)
 MURRAY COUNTY DATUM
 N= 137054.532
 E= 569587.243

I:\NRCS\M33106137\TASK 12 D JANS DES MOINE CO\NE 34-106-39.DWG

Statement of evidence relative to this corner location is on back of page.

I hereby certify that this document and the data contained herein was prepared by me or under my direct supervision.

Rory Jensen 9/11/2013
 Rory Jensen DATE

Registration No. 19789
 Land surveyor, Professional Engineer
 County Surveyor, County Engineer

OFFICE OF THE COUNTY RECORDER

County of _____
 I hereby certify that this document was filed in the Co. Recorders office at _____ M. on the SEP 13 2013 day of _____ A.D., 20____
 County Recorder James V. Johnson
 By _____, Deputy
 DOCUMENT NO. _____

Statement of Evidence:

Northeast Corner Section 34, Township 106 North, Range 39 West

- 1861 Original Government Land Survey was done by William S. Smoot, US Deputy Surveyor. At 80.00 chains he set post corner to Sections 26, 27, 34 and 35, drove charred stake and made mound with trench and pits as per instructions.
- Jan. 20, 1880 Survey in Section 34 by J.W. Woolstancraft indicates a Government mound and stake at the corner as per Survey Book in Recorder's Office.
- 1974 Murray County Highway Department had ties to corner. After looking for ties to the corner all ties were gone. The ties were a steel pin, concrete monument and 2"x2" hub.
- May 22, 1984 Murray County Highway Department for nothing. They dug a 8'x9'x4' hole with a backhoe and found nothing.
- May 5, 2013 Bolton & Menk Inc. when doing a survey for NRCS Jans Easement Boundary Survey found a PK nail at the location of the Northeast Corner. While digging at above location the PK nail was dug out and a mag nail was placed at the location of the PK nail.

Ties were placed on the corner and by GPS methods it was tied into the County Coordinate System NAD 83 (2011 Adjustment).

The evidence is not conclusive as to the true corner location, however the occupational and collateral evidence suggest that this is a reasonable location as to the corner. Additional information regarding the preparation of this certificate can be obtained by contacting: Bolton and Menk, Inc., Mankato, MN.